

Ubomi Obutsha Centre

Project Profile

July 2008



A Community Development Project of

**COMBINED CHRISTIAN MINISTRIES
TO THE POOR**



Contents

Introduction	3
Project Establishment & Development	4
The Need	5
Key People	6
Our Vision	7
Our Mission	8
Core Values	9
Statement of Purpose	10
Objectives	11
Project Overview	12
Project Overview Clarification	13
Project Activity Details	14
Volunteer Policy	16
Criteria for Classification of Community OVC's	18
Project Sustainability	19
Monitoring & Evaluation	19
Expected Outcomes	20
Conclusion	20
Contact Details	21
Banking Details	21
References	21
Pictures	22 - 24

Introduction

The Ubomi Obutsha Centre is situated on Salamntu Street, KwaZakhele Township, Port Elizabeth, South Africa. It is surrounded by the poverty stricken communities of Besuthwini, Khiwane, Masakhane 1, 2 & 3, Hlalani, Yizoyizo, Tozamamani and Moscow – all communities of the townships KwaZakhele, Zwide and Soweto on Sea incorporating 25000 to 30000 individuals. These areas were settled with Xhosa's and Sotho's during the forced removals campaign of the Group Areas Act, of the former Apartheid regime, in 1957.

In general, members of these communities have low education levels and the unemployment rate is 75%. Unable to support themselves, the majority of inhabitants rely on various government social grants for their livelihood and many of these people then still need to rely on the assistance of others to survive.

The largest problems experienced in this area are:

- a) A poor living environment.
- b) Poor education levels.
- c) Debilitating & life-threatening diseases such as HIV/AIDS & TB.
- d) Gross neglect of healthy childhood development.
- e) Substance abuse, child abuse, promiscuity, ignorance, disrespect & apathy.

Project Establishment & Development

In line with the Vision of Combined Christian Ministries to the Poor (CCMP), the Ubomi Obutsha (New Life) Centre was established in 1998 as a centre of practical ministry in response to the plight of the people of the surrounding communities.

For many years the Centre was managed by people who were from outside the community. But as active participation of volunteers from the surrounding community increased, the Ubomi Obutsha Centre grew into a much larger community development project managed predominantly by community members themselves in collaboration with, and assisted by people from outside the community, working within the framework of CCMP with a view to be developed into an independent Non-Profit Organisation.

Early programs included a Sunday School, a teenage youth group, an adult Bible study and sewing classes, food parcel distribution and disaster relief. Later, a junior youth and soup kitchen were added.

These programs have grown in number and scope and now consist of 26 activities grouped into 6 categories which are dealt with in more detail later in this document.



The Need

The very nature of the community and environment surrounding the Ubomi Obutsha Centre makes the lives of all the children living within it vulnerable to the destructive cycle of poverty which will potentially enslave them to unproductive, unsustainable and undignified lives as adults.

Because of the ravages of a past unjust political system this community, and many others like it, finds itself without the resources, facilities, skills or even the caregivers necessary to provide a protective and positive environment in which children can grow and develop constructively on their journey to adulthood.

The Ubomi Obutsha Centre aims to address these shortcomings as broadly as possible in three ways:

1. Developing members of the community as volunteers working together with a common vision and objectives to positively impact the lives and development of their own children as well as other children within their reach in the community.
2. Providing resources like food, clothing, school assistance, etc that will meet some of the basic needs of the most vulnerable children in the community and their caregivers.
3. Developing a facility (the Centre building itself) into a venue where vulnerable children and their caregivers can have access to facilities and caring people to encourage productive growth in their lives and where they will be able to participate in programs that build and develop the inward attributes of character needed to apply themselves meaningfully to positive growth in their lives.

Key People

Nineteen Community Volunteers form the backbone of the Centre's daily operation, management, and community work with a further four active volunteers coming from outside of the community.

The Centre Executive Management Team, with signing powers, includes:

- Mark Lawler – Chairperson & Resource Developer responsible for fund raising and to create awareness of the Centre's work outside of the community.
- Hamilton Matomane – Vice Chairperson & Transport Coordinator. Regarded as an "Elder" or "Father" within the project.
- Nondumiso Langa – Secretary & Project Manager responsible to oversee volunteer and program activities and community networking.
- Vuyisile Nkomombini – Treasurer & OVC Enrichment Activities Coordinator responsible to manage all the Youth related activities at the Centre.

Other key people who volunteer in different (sometimes multiple) capacities, either on the Centre Management Team, as Activity Leaders or as general volunteers, include:

Nomathemba Mafani	Christine Gqokoma
Letitia Nkonyeni	Noluthando Mbongo
Emily Mtau	Ntombi Nzwanana
Mabhelandile Mafuna	Boniwe Dywanisi
Andile Makanda	Nkenke Windvoel
Nombulelo Sikelwa	Nosisana Kate
Nomqibelo Hoyi	Lumka Mbanga
Thandiwe Feni	Thandiwe Faltein
Janette Singaphi	Tamsanqa Songongo
Flora Chikanda	

Additional key people serving as Advisory Board Members from the CCMP Management Team, not already mentioned above, include:

John Fielden	Sindile Vezile
Janet Ablort – Morgan	Julian Pledger

Our Vision

To develop the poorest of the poor in our community,
through the love of Christ, to live productive lives.

Our Mission

We undertake to break the cycle of poverty in the lives of the poorest members of our community, especially children at risk, by mobilising and equipping ourselves to engage, through the love of Christ, in their growth and development towards self sufficiency by organising supportive and constructive social, spiritual, and educational interventions and programs that affect a positive change in their environment as well as their person.

Core Values

As a project of Combined Christian Ministries to the Poor, managed by members of the community surrounding the Ubomi Obutsha Centre, these values are at the core of our work:

1. We value the restoring of people to a relationship with God through the person of Jesus Christ.
2. We value the children of our community and their future.
3. We value the physical, emotional and spiritual health of the people in our community.
4. We value the importance of education.
5. We value dedication and a sense of responsibility.
6. We value confidentiality.
7. We value respect for all people of all ages and all backgrounds.
8. We value love that expresses itself through these values.
9. We value each other as part of a team.

Because we value these things, we subscribe to the following:

Statement of Purpose

In our community there are many children, from infants to those about to become adults, who are in danger of losing, or have already lost, their care givers to diseases such as HIV/AIDS, TB and other factors like substance abuse, physical abuse, crime, irresponsibility, a lack of education, etc. which are related to the general poverty of the people. These children are often not properly cared for or nurtured and so are likely to grow up to live lives of dependence on others to meet even their most basic needs.

We choose not to sit by and watch as this happens, but rather choose to take these children as our own and to work together within the community to fill the gaps in their lives where we can. We want to see the children of our community grow up to be successful and live meaningful, God honouring, self supporting and productive lives for the good of not only this community, but for the greater good of our city and country as a whole.

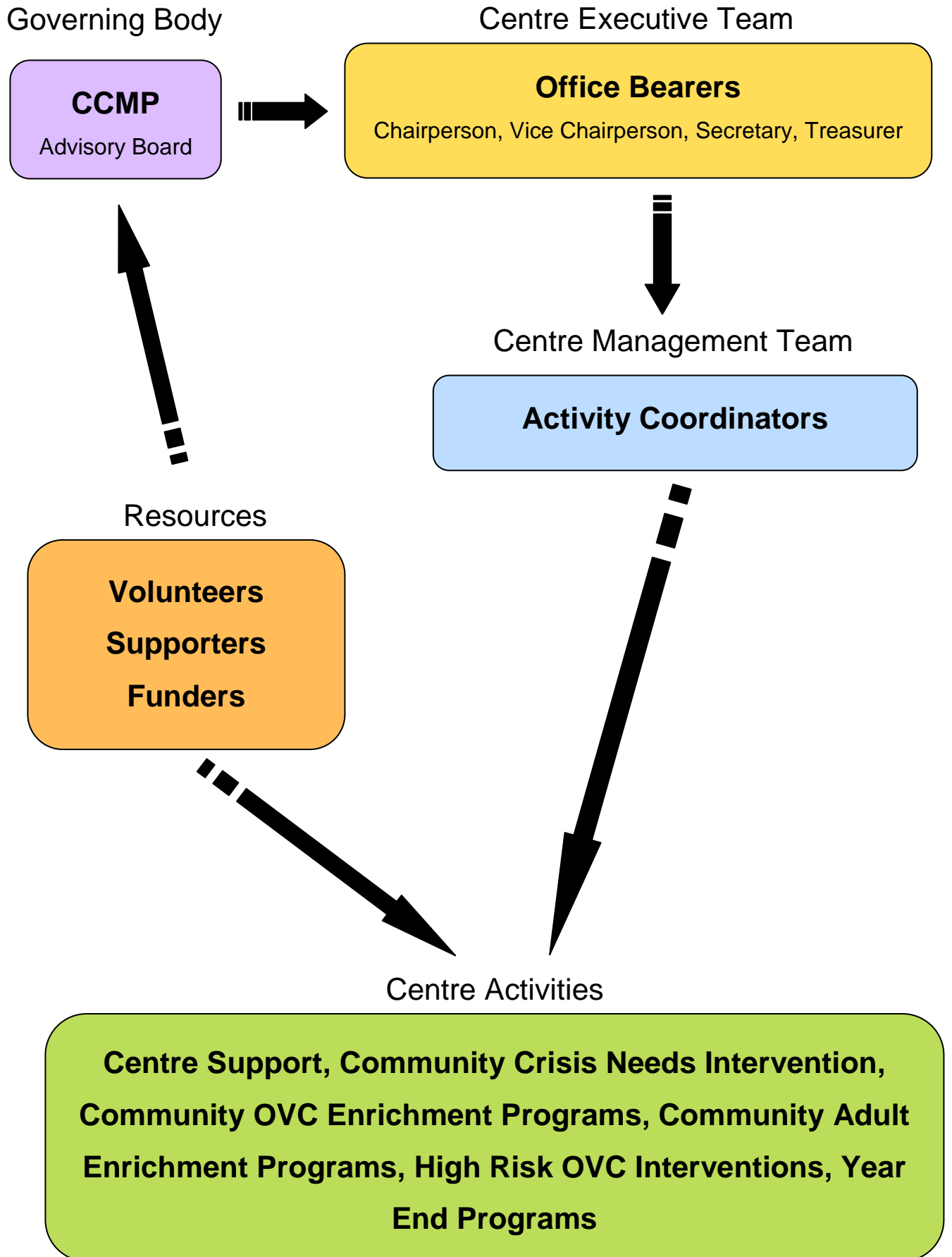
We recognise through experience that only limited success can be realised by working with only niche groups within the community, and so our approach is to address the problem of orphaned and vulnerable children (OVC's) in our community in a more inclusive way by affecting their environment as well as their person.

To this end, we work towards the following:

Objectives

1. To build working relationships between community members and community institutions that identify with this purpose and would volunteer to be a part of it.
2. To proactively identify children at risk by interacting with those children and adults attending our Centre Programs and through referrals from within the community.
3. Assess households where possible to decide the best course of action to be taken for individual needs.
4. Provide programs that will instil in these children the internal abilities of character that will ultimately enable them to rise above their situations.
5. Provide food and clothing directly to those children whose care givers are grossly inattentive to or abusive of their needs.
6. Provide physical resources for these children that will help them to achieve success in their schooling.
7. Liaise with social workers, police, clinics, schools, etc to intervene where we feel there is little that we can do to assist the current circumstances within a household.
8. Assist the care givers in OVC households to stabilise their situations through educational, motivational, and socially developmental programs and by providing towards the nutritional and physical needs of the household where possible to ensure that the input given to their children does not lose its impact.
9. Welcome and diligently work with any assistance offered to us from outside our community.
10. Create opportunities for volunteers to grow in their abilities through regular training and encouraging of proactive participation.

Project Overview



Project Overview Clarification

1. Governing Body

Combined Christian Ministries to the Poor (CCMP), registered with the South African National Government Department of Social Development as a Non-Profit Organisation (NPO 046-047), is the founding organisation of the Ubomi Obutsha Centre & as more community members take active roles in the leadership and daily running of the project, and are developed in this capacity, CCMP currently adopts an oversight and accountability function for the project.

2. Centre Executive

Consisting of a combination of CCMP and community representatives, the Centre Executive Team manages all executive functions regarding policy, finance, Centre activities, volunteer management, fund raising and networking.

3. Resources

All people, goods and funds that are made available to the work of the project are channelled to work together to achieve the objectives of the Ubomi Obutsha Centre.

4. Centre Management Team

A working team of community volunteers who oversee the six areas of activities within the project.

5. Centre Activities

Programs and interventions coordinated towards meeting of project objectives.

Project Activity Details

1. Centre Support: - Providing a supportive framework within which all programs can operate effectively.
 - Administration: Managing overheads, finances, equipment, volunteers, structures & record keeping facilitating the smooth running of all programs.
 - Centre Development & Maintenance: Upgrading & maintenance of the Centre building to maintain a practical venue for the operation of activities.
 - Volunteer Enrichment & Training: Developing & equipping volunteers with the appropriate knowledge & skills required to run Centre activities towards the fulfilment of our objectives.
 - Transport: Service all transport needs of Centre activities including food collection, transport of OVC's to & from programs at the Centre, etc.
 - Community Awareness Campaigns: Maintain awareness within the community regarding activities offered by the project & for the recruitment of more community volunteers.

2. Community Crises Needs Interventions: - Providing relief, where possible, to community households that suffer severe loss due to extreme circumstances (eg: shack fires, flooding, family deaths, etc)

3. Community OVC Enrichment Programs: - Developing the personal characters & skills of community OVC's through the availability of resources & general life skills programs.
 - Sunday School: Bible based spiritual discipleship.
 - Kids' Club: Age appropriate (6 – 12yrs) life skills program.
 - Teens' Club: Age appropriate (12 – 19yrs) life skills program.
 - Teen Enrichment Library: Facility for community teenagers who regularly attend youth enrichment programs providing study space, tutoring when possible and access to resources needed to improve and support their educational efforts.
 - Soup Kitchen: Nutritious soup & bread meal served twice weekly for hungry community children.
 - Holiday Clubs: Constructive themed school holiday programs.
 - Holiday Enrichment Days: Special school holiday programs facilitating constructive playing & entertainment (game days, movie days, etc).
 - Educational Outings: Visits to educational venues and events.

4. Community Adult Enrichment Programs: - Assisting community adults to provide more stable homes and communities in which orphaned & vulnerable children can develop.
 - Food Garden: An opportunity for community adults to be part of a successful, fulfilling program as part of a team as well as provide nutritional food for OVC's dependant on the Centre for food.

- Bible Study: Bible based spiritual discipleship aimed at bringing hope to members of the community and assisting them to raise the moral base in their lives.
- “Wednesday Workshop”: A platform where issues ranging from HIV/AIDS to childcare to crime to nutrition to substance abuse are addressed to assist community members to provide a better environment in which their children can develop and grow.
- “Edutainment”: A platform for enriching the lives of community adults through educational documentaries, inspirational movies & hobby/craft workshops thereby expanding their worldview which they can then pass on to the children in their care.

5. High Risk (HR) OVC Interventions: - Identifying children whose lives are at great risk and coordinating a range of appropriate interventions to avert possible shortcomings in their development and following through with regular monitoring and interventions until a favourable outcome has been achieved.

- Household Assessments & Recommendations: Assessing the living conditions of OVC’s and making recommendations for appropriate interventions.
- Basic Needs Support – Households: HR-OVC households where the heads/caregivers are seen to be responsible are supported with food parcels and other donations where possible.
- Basic Needs Support – Individuals: Where HR-OVC’s come from households where the heads/caregivers are seen to be irresponsible, their basic needs will be met directly from the Centre.
- School Assistance: Providing uniforms, stationery, fees, etc for HR-OVC’s where needed & monitoring their progress.
- Toddler Educare: Providing a constructive interactive environment to better prepare HR-OVC toddlers for foundation-phase education.
- Community Institution Partnerships: Maintaining active networked relationships with other institutions within the community who can direct OVC’s to the project and on whom the project can refer extreme cases of neglect or abuse.

6. Year End Programs: - Wrapping up the year’s programs with a small celebration or outing including gifts & awards where appropriate.

- Youth Christmas Party: An opportunity to reward participation in Community OVC Enrichment Programs.
- Teen Incentive Reward: A special reward for those teenagers who have applied extra effort to the development of their own lives and the lives of others, throughout the year.
- Adult Christmas Party: An opportunity to reward participation in Community Adult Enrichment Programs.
- Volunteer Outing & Reward: Culmination of the year’s work for community volunteers in acknowledgement of their service.

Volunteer Policy

All those working together under the banner of the Ubomi Obutsha Centre do so in a voluntary manner – without the expectation of payment – and for the benefit of the community that the Centre serves.

1 Volunteer Categories

- 1.1 Fulltime Volunteer: Either a member of the community within the Ubomi Obutsha Centre's defined borders or an individual from outside the community who participates in the daily running the Centre's activities.
- 1.2 Contract Volunteer: An individual who commits to a defined period of time to participate in the daily running the Centre's activities.
- 1.3 Part-time Volunteer: An individual who contributes when they are able to in the running of the Centre's activities.
- 1.4 Program Leaders: Individuals who participate by leading specific activities only.

2 Volunteer Compensation

- 2.1 Volunteers may – where possible, where budgeted for, and only when funds are available – receive some financial compensation in the form of a stipend or honorarium.
- 2.2 Weekly stipends may only be paid to fulltime volunteers according to the following three categories: 1) Project Manager, 2) Centre Executive, 3) Critical Volunteers &, 4) General Volunteers – according to the rates budgeted for by the Centre Executive Team and approved by the Governing Body.
- 2.3 A probation period of 6 months, divided into two 3 month periods, will apply to all fulltime volunteers. A fulltime volunteer will be eligible to receive 50% of the budgeted weekly stipend for their category after completing 3 months of consistent participation. Thereafter, a fulltime volunteer will be eligible to receive 100% of the budgeted weekly stipend for their category after completing a further 3 months of consistent participation.
- 2.4 Honorariums as budgeted for by the Centre Executive Team and approved by the Governing Body may be paid to Program Leaders to help cover any costs incurred.
- 2.5 Stipends and honorariums will only be paid where budgeted for and when funds are available.
- 2.6 Any volunteer wishing to not receive stipends or honorariums due to them may so decline.

3 Volunteer Code of Conduct

- 3.1 As an organisation based on the Christian faith, ideally volunteers are to be disciples of Jesus Christ and his teachings and this should be evident in their lives.
- 3.2 The Ubomi Obutsha Centre does not however exclusively accept “Christians” as volunteers but does expect “non-Christian” volunteers to: 1) Respect the generally accepted fundamentals of the faith & those who live by them, 2) Not propagate the views of any other faith or philosophy as a representative of the organisation or while conducting work on behalf of the project.
- 3.3 All volunteers need to be of sober habits. (ie: no substance abuse, no promiscuity, no criminal activity, no gossiping, no selfish agendas, no aggressive behaviour, etc)
- 3.4 All volunteers need to be willing to work freely for the benefit of others.
- 3.5 All volunteers are encouraged to be proactive and drive action, approved by the Management Team, themselves.
- 3.6 All volunteers need to be teachable and willing to work within a team.
- 3.7 All volunteers are expected to provide reports of their work according to the requirements of the different activities.
- 3.8 All volunteers must communicate intended absence from their commitments to the project in writing to the Centre Executive Team.
- 3.9 The Centre Executive Team reserves the right to reprimand, restrict participation or dismiss any volunteer due to behaviour that reflects poorly on, or affects negatively the operation of the project.
- 3.10 Volunteers are to acknowledge their acceptance of this code of conduct and their duties as laid out in their relevant Volunteer Participation Forms by signing them in duplicate.

Criteria for Classification of Community Orphaned or Vulnerable Children

1. Between the ages of 0 – 18yrs.
2. Children living in a home where the income is less than R700 per person per month.
3. Children who have been orphaned or abandoned by their parents.
4. Children who are in some way neglected or abused by their parents or caregiver.
5. Children whose living conditions at home are dangerous or poor.
6. Children living in dangerous or unhealthy areas.
7. Children who are infected or affected by life threatening diseases.
8. Children who are affected by or suffer from debilitating diseases.
9. Children who are regularly exposed to substance abuse, physical/sexual abuse, or emotional abuse in some way.
 - a. If two or more of the above points are evident in a child's life, that child will be considered to by us to be at risk.
 - b. If a majority of the above points are evident in a child's life, that child will be considered to by us to be at high risk.

Project Sustainability

1. One of the great strengths to the project's future sustainability is the ever increasing active participation of community volunteers who desire to contribute towards a better future for their community. Through in service training & topical workshops community volunteers are equipped & constantly developed to manage & develop support for project activities.
2. As activities for adult clients develop, income generation aspects will be included to their routine. (eg: sale of excess vegetables from the Food Garden, sale of crafts learnt in "Edutainment", etc)
3. Toddler Educare charges a nominal fee to help cover costs.
4. The Ubomi Obutsha Centre hall is made available for hire when not in use.

Monitoring & Evaluation

1. An ongoing weekly report is compiled including information on each activity as it finishes which maintains an up to date record of activities for monthly monitoring.
2. Registers are taken and fed into a database system that generates a variety of figures for monthly monitoring alongside the weekly reports.
3. Households of OVC's are given a score, against predetermined categories, during regular visits. The fluctuations of this score over time can help monitor the impact of interventions made by the project.
4. The Project Manager makes use of a Supervisory Tool during monthly one-on-one supervisory meetings with volunteers.
5. Monitoring and evaluation meetings are held monthly by the Centre Executive Team.
6. Monitoring, evaluation & feedback meetings are held quarterly with all volunteers.

Expected Outcomes

1. That family homes will provide a more stable and supportive environment for the children they house.
2. That there will be a change from reckless, neglectful, ignorant & lazy lifestyles to responsible, attentive, knowledgeable & productive lifestyles for those impacted by our activities. Where killer diseases & abusive behaviour will no longer be considered normal.
3. That orphaned & vulnerable children will develop the inward attributes of character that will allow them to develop constructive, mutually beneficial relationships and succeed in the formal education system and their adult lives.
4. That increasing numbers of community members will take ownership their community's future & will support each other & work together to better their lives.
5. That the people of the community impacted by our project will have a real experience of the restorative work of God through the love given in Jesus Christ.

Conclusion

We feel that the only reasonable action to take in dealing with the broad nature of the problems in our community mentioned earlier is an equally broad response & this is evident in the activities we have between our vision & our expected outcomes.

We acknowledge that the task set before us is large & that some of what we plan is beyond our reach now but, with the correct training, support, finance & committed volunteers, we know that we can grow to accomplish what is needed to make the necessary difference in the community we live & be an example to others like it.

Contact Details

Phone

Mark Lawler (CCMP Director / Project Chairman) 082 473 4389

Nondumiso Langa (Project Manager) 072 685 4379

Land line - 041 360 2780

Fax - 086 518 5458

Physical Address

50117 Salamntu Street, Kwazakhele, Port Elizabeth

Postal Address

PO Box 7348, Newton Park, 6055

Email

mark@ccmp.org.za

Banking Details

First National Bank

Account Name: Ubomi Obutsha Centre

Account Number: 62129245355

Branch Name: Newton Park

Branch Code: 261050

References

The Barnabas Trust - Mentoring Organisation
Anneline Naidoo - 041 585 2234

Michael Howcroft Incorporated - Auditors
Michael Howcroft - 041 373 4752

Nelson Mandela Bay Municipality - Ward 27 Councillor
Mr M. Seti - 041 464 0665



Community OVC's arriving at the Centre



Singing & dancing during a youth program



Teen youth discussion



"Wednesday Workshop"



Holiday club for community OVC's



Sunday School



Teen youth holiday drama/self-worth program



Teen youth holiday drama/self-worth program graduation



Sunday School



Educare nap time



Soup kitchen



Educational outing



Educare lunch



Soup kitchen



Teens studying in the resource library



Volunteer training workshop



School supplies



School assistance



Food garden



Food garden



Food garden harvest



Community shack



Community "playground"



Supplying a community OVC household with some basic needs.



Volunteers reviewing household assessments



Community awareness campaign



Year-end party awards